

Christmas

Home Learning Challenge

Design some Christmas wrapping paper. Can you use a repeating pattern in your design?



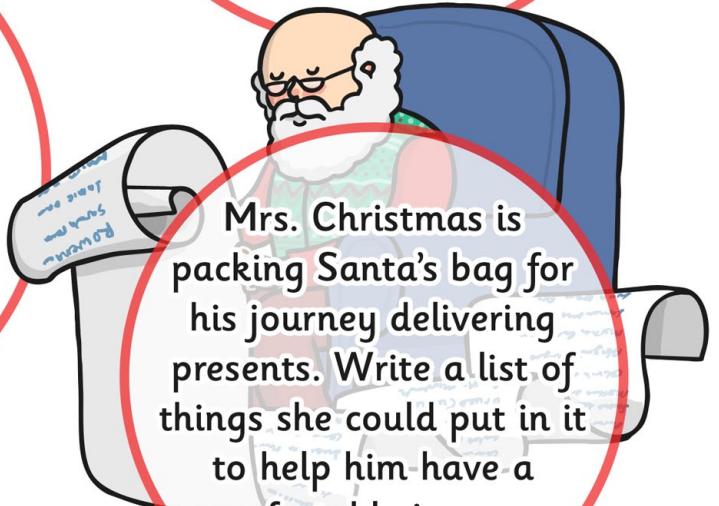
There were 10 baubles on the Christmas tree, then 3 baubles fell onto the floor. How many baubles are left on the tree? You could draw a picture or use your fingers to help you work out the answer.



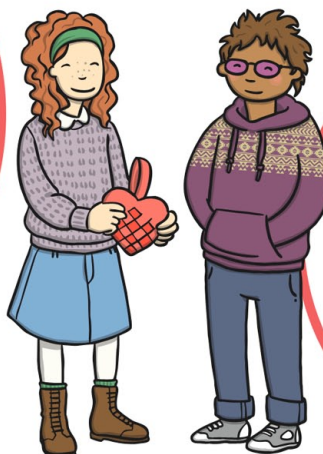
Draw a picture of a snowman using lots of 2D shapes. You might be able to use all of these shapes when you draw your snowman - circles, triangles, rectangles and squares.



Mrs. Christmas is packing Santa's bag for his journey delivering presents. Write a list of things she could put in it to help him have a comfortable journey.



The Three Wise Men followed a star to find the stable where the baby Jesus lay. Have a look at the stars with a grown up. Can you find the brightest star? What else can you see in the night sky?



Christmas time is a time to think about ways we can be kind and helpful to others. Find a way that you can help someone in your family.

