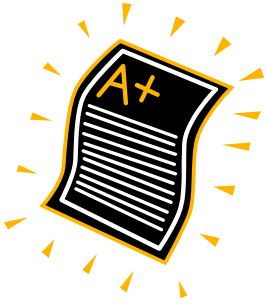


# EXCUSES, EXCUSES

Here are some reasons pupils give for being late. What can you suggest to help them be on time for school?  
(Put your answers below)



I was trying to find my homework.

\_\_\_\_\_

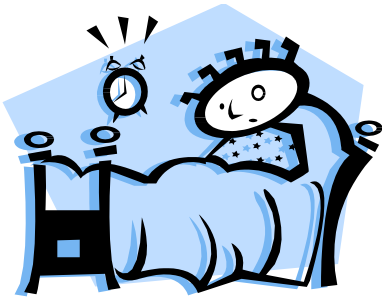
\_\_\_\_\_  
\_\_\_\_\_  
\_\_\_\_\_



My PE kit was in the wash

\_\_\_\_\_

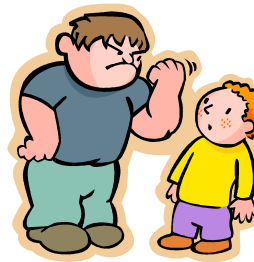
\_\_\_\_\_  
\_\_\_\_\_  
\_\_\_\_\_



No one told me it was time to get up.

\_\_\_\_\_

\_\_\_\_\_  
\_\_\_\_\_  
\_\_\_\_\_



I was worried about being bullied on the way to school.

\_\_\_\_\_

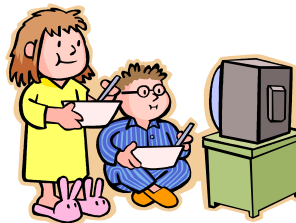
\_\_\_\_\_  
\_\_\_\_\_  
\_\_\_\_\_



I missed the bus.

\_\_\_\_\_

\_\_\_\_\_  
\_\_\_\_\_  
\_\_\_\_\_



I was tired because I stayed up late.

\_\_\_\_\_

\_\_\_\_\_  
\_\_\_\_\_  
\_\_\_\_\_

# THE IMPORTANCE OF BEING ON TIME

We all know being on time matters – but why? Think about when you need to be on time, what can happen if you are not on time, and who else could be affected by your lateness. Make a note of your thoughts in the columns below.

When is it important to be on time?	What might happen if you are late?	Who would be affected?
e.g. Doctor's appointment		