



## Sonning Common Primary School

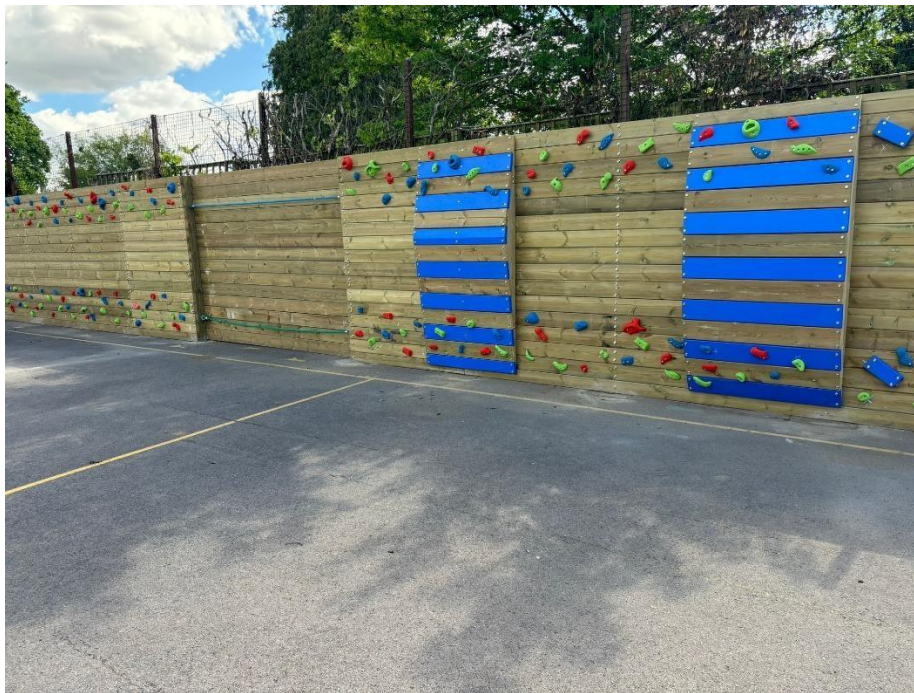
### PTA Newsletter

**May 2024**

Dear Parents,

Thank you for all your continued support and coming along to support our events this year. I hope you have enjoyed the year so far, it has gone so fast, and we are nearly in the last term.

We have been very busy this year with many events including the colour run, 10k race, Christmas Fair, discos, quizzes and On Your Bike. We have used PTA funds to buy many things for the school including a Chinese workshop, cooking ingredients for year groups and Forest Camp and equipment used at break times on the playgrounds. The major expense this year has been the traversing wall which you may have seen has been constructed in the KS2 playground.



We have some wonderful plans for next year already including a wine tasting evening, discos, a games night and our 10k race that will take place on Sunday 6th October.

## **Summer Fair - Saturday 29th June 12-3pm**

We have our Summer Fair coming up soon and this year our theme is the Olympics. We will have lots of exciting games and stalls with a sporty twist to them, including mini golf from Mapledurham Club, Williams PT will be holding a weightlifting game, we have foam javelins and Madame Baillie will be doing some Chinese kickboxing. We will also have our classic games and many stalls from local charities including Active Leaders and Sports in Mind. If you would like a stall on the day, please contact us on [pta@sonning-common.oxon.sch.uk](mailto:pta@sonning-common.oxon.sch.uk)

We will need volunteers from each year group to help us set up the fair from 10am, run all the games we have planned and help us put everything away. If you can spend some time that day helping, please contact your year group rep (Kites – Emily Doubek, Year 1 – Rebecca Champion, Year 2 – Tiff Belcher, Year 3 – Jackie Stoffels, Year 4 – Charlotte Hunt, Year 5 – Helen Simic, Year 6 – Katie Skilton) or email [pta@sonning-common.oxon.sch.uk](mailto:pta@sonning-common.oxon.sch.uk)

We are particularly looking for someone to lead the BBQ team on the day. We will provide all the equipment and food. If you have an interest in helping us with this please email [pta@sonning-common.oxon.sch.uk](mailto:pta@sonning-common.oxon.sch.uk)

Your children will be having a non-uniform day on Friday 28<sup>th</sup> June and in return we request one or more of the following:

1. A bottle for the adult's tombola
2. A jam jar filled with sweets or little toys
3. Good-quality second hand toy donations (these can be left under the bike shed from now)
4. Small cakes for our cake stall

We will be holding a raffle at the summer fair and tickets for you to sell to friends and family before the fair will be sent out to you very soon.

### **Clothes Bank**

We now have a clothing bank located outside the front of the school (at the opposite end to the library entrance) where you can donate good quality unwanted clothes, shoes, bags and towels anytime. We get 40p for every kilo we collect.

### **Matched Funding: are you able to help?**

Did you know that our fundraising efforts could be potentially doubled if your employer offers a 'match funding scheme'. A number of employers now offer a Match Funding scheme where the employer will match some or all of the amount raised at a fundraising event. We would be very grateful if you could see if your employer has a match funding scheme (the name of the scheme may vary depending on the company) and if they are willing to match funding at any of our events. We have a number of events in the pipeline this year and it would make a huge difference to our fundraising efforts, if the amounts could be matched by an employer. You may need to be involved, but please note this could be as simple as helping out on the day and we will not ask you to arrange the event or join the PTA if your employer can support the school! This is

just a few of the companies who operate a matched funding scheme: Whitbread, GSK, PwC, Barclays, Boots, Ocado and many more.

For more information please contact: [pta@sonning-common.oxon.sch.uk](mailto:pta@sonning-common.oxon.sch.uk) or via the school office.

### **Name Tag Labelling: we can earn commission**

If you are needing to name any new uniform or equipment, please consider using the code below:

Easy2name– Various types of labels. Raise up to 20% per order by entering the fundraising group: **FR-SONNING-99**. Any order using this code will also receive free shipping with their purchase.

Stikins – Various types of labels. Raise up to 30% per order by entering the code **18186**

### **Your School Lottery**

A reminder that the PTA have a lottery. Tickets cost £1 each, for each weekly draw and 40% of any ticket sales is donated back to our school. By taking part in the draw, you have the chance of winning a weekly prize, and everyone is entered into the national £25,000 jackpot prize.

To start supporting, please visit <https://www.yourschoollottery.co.uk/lottery/school/sonning-common-primary-school>.

### **Second hand Uniform Shop**

The uniform shop is open every Friday from 3:20pm. Donation of unwanted uniform can be left in the yellow wheelie bin behind the shop. All items for sale are 50p and all the money goes back to support your school.

### **Join our meetings**

Finally, we are always looking for new members to join our group or if you want to help us with events or run your own event to raise money for the school (you do not need to join the PTA to do this), please do get in touch on [pta@sonning-common.oxon.sch.uk](mailto:pta@sonning-common.oxon.sch.uk)

Many thanks for your continued support and all the best from your PTA.